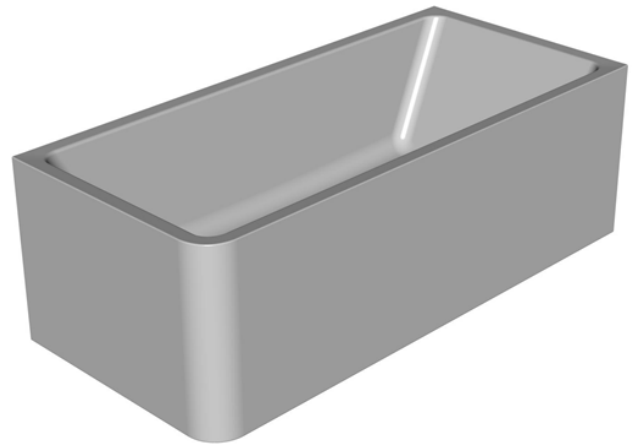
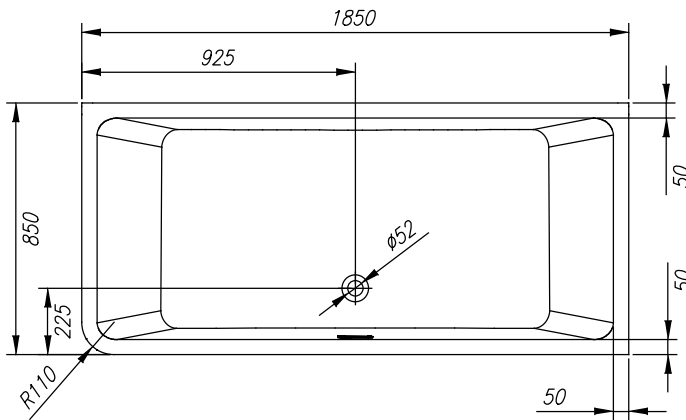
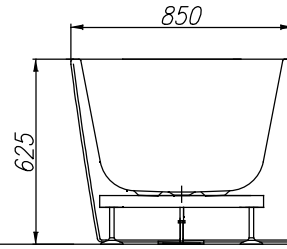
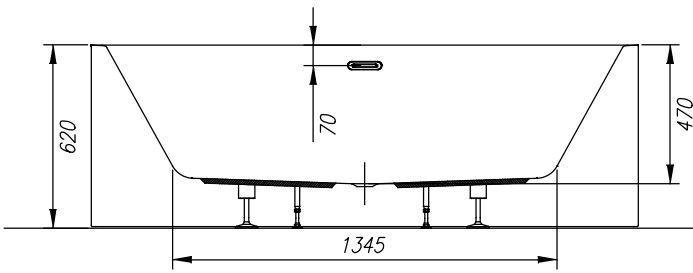
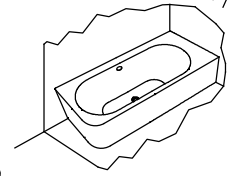


PREINSTALLATION  
VORINSTALLATION



VOLUME (l)  
VOLUMEN (l)



MAX. LOAD (kg)  
MAX. BELASTUNG (kg)

FLOOR LOAD (kg/m<sup>2</sup>)  
BODENBELASTUNG (kg/m<sup>2</sup>)



360

500

320

-  - Spot for el. cable 3x2.5mm<sup>2</sup>, length approx. 1m
- Platz Stromkabel 3 x 2,5 mm<sup>2</sup>, Länge cca. 1 m
-  - Spot for el. cable 1x6mm<sup>2</sup> for earthing, length approx. 1.5m
- Platz Stromkabel 1 x 6 mm<sup>2</sup> für Erdung, Länge cca. 1,5 m

INSTALLATION RECOMMENDATION  
MONTAGEEMPFEHLUNG

-  - Connection of hot and cold water 1/2" min 0.2Mpa, max 0.4Mpa
- Anschluss Warm- und Kaltwasser 1/2" min 0,2 Mpa, max 0,4 Mpa
-  - Drain spot  $\varnothing$  50mm
- Abflussplatz  $\varnothing$  50 mm

